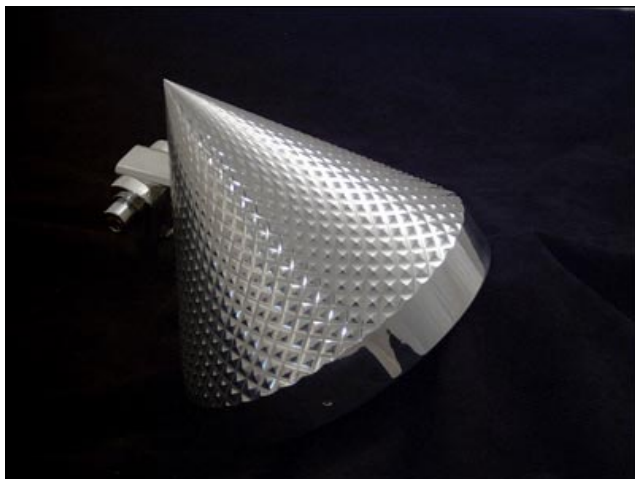
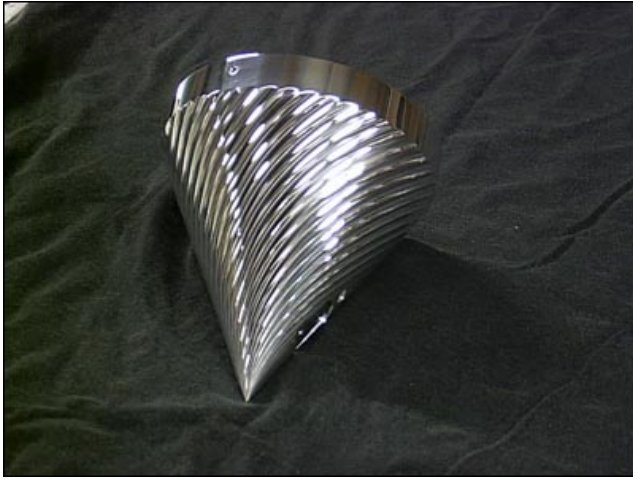


5.75" Series Headlights

Comes complete with DOT H4 high/low beam bulb, integrated mount, mounting block, and hardware.



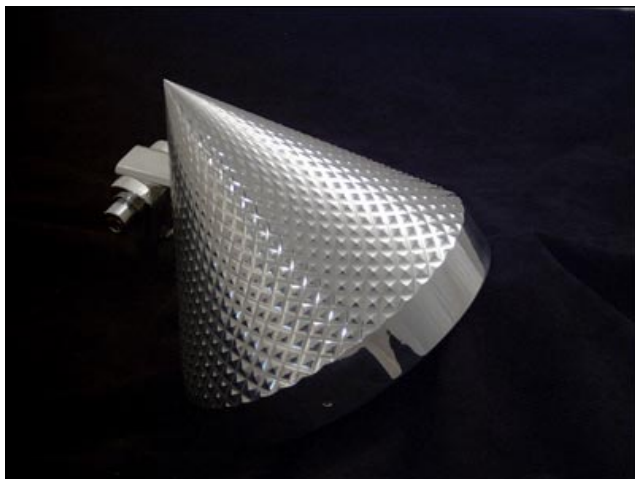
	Part Number	Description	Price, US\$
	512	5.75" Twelve-sided Headlight H4	\$ 596
	5LS	5.75" Liquid Headlight H4	\$596
	5DC	5.75" Diamond-cut Headlight H4	\$596



5180	5.75" One-eighty Headlight H4	\$596
5NA	5.75" Nautilus Headlight H4	\$596

4.5" Series Headlights

Comes complete with DOT H3 high-beam-only bulb, integrated mount, mounting block, and hardware.



	Part Number	Description	Price, US\$
	412	4.5" Twelve-sided Headlight H3	\$576
	4LS	4.5" Liquid Silver Headlight H3	\$576
	4DC	4.5" Diamond-cut Headlight H3	\$576



4180	4.5" One-eighty Headlight H3	\$576
------	------------------------------	-------



4NA	4.5" Nautilus Headlight H3	\$576
-----	----------------------------	-------



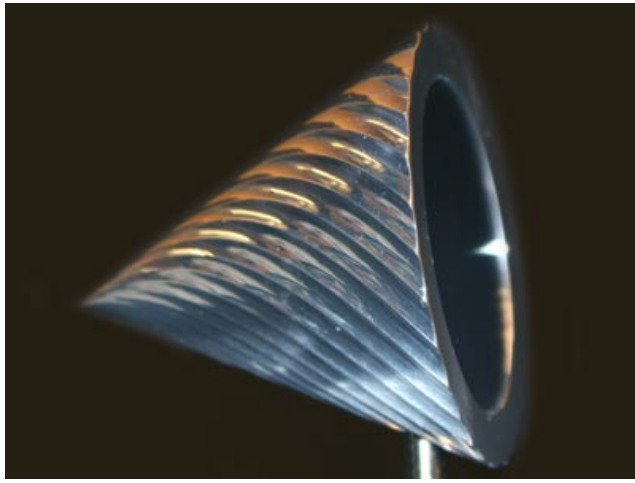
4ST	4.5" Smooth Tapered Headlight H3	\$576
-----	----------------------------------	-------

2.25" Series Mirrors

Low-glare optic, solid mount with handle bar clamp uses one 5/16" (.312) bolt with integrated post to eliminate "shaky mirror." Ideal for solid mount handle bars and Rigid frames. For use with or without 1" handle bar clamp.



Part Number	Description	Price, US\$
M12	2.25" Twelve-sided mirror & clamp	\$180
MLS	2.25" Liquid Silver mirror & clamp	\$180
MDC	2.25" Diamond-cut mirror & clamp	\$180



M180		
	2.25" One-eighty mirror & clamp	\$180



MNA		
	2.25" Nautilus mirror & clamp	\$180



STM		
	2.25" Smooth Tapered mirror & clamp	\$165

V-twin Accessories

These parts are designed to fit V-twin motor cycles.



Part Number	Description	Price, US\$
MCM	Choke Mount for MIKUNI carbs	\$50
FC	Clutch cable frame clamp, 1.5 tubing	\$50
FB	41mm Fork Brace	\$195



FBC		
	41mm Fork Brace & clamp	\$225



KS		
	Key housing with ignition switch	\$175



SM		
	Smooth mount	\$90

Russell Design Works specializes in distinctive, handcrafted billet aluminum accessories for discriminating custom builders and resellers. Our lights and mirrors are designed to fit all makes and models of motorcycles. Most products are CNC machined from 6061-T6. aluminum billet. Our parts are not cast, rolled, or stamped. Every part is made to order and hand-polished.

We also accept custom orders for most parts. We will design a unique part to your specifications, or customize any of our signature products to meet your needs. Call or email for details.

Kit Russell / Russell Design Works (RDW)
1155 Comstock Road
Hollister, CA 95023
Phone: 831-636-8417
Fax: 831-634-0293
Email: Kit@RussellDesignWorks.com

Shop hours are 10:00 a.m. to 5:00 p.m. pacific, Monday through Saturday. If we are unable to answer your call immediately, leave a message and we'll return your call as soon as possible.

Our sales policy.

Prices, terms, and conditions are subject to change without notice.

All orders are COD/Certified Check. Visa and MasterCard are accepted via PayPal. All orders for custom built or altered items are subject to a 50% non-refundable deposit.

Shipping & Handling via for UPS Ground:

Up to \$250.00	\$12.00
\$250.01 - \$450.00	\$18.00
\$450.01 - \$750.00	\$30.00
\$750.01 & over	\$40.00

Returns.

We accept returns for replacement or credit under the following conditions only.

Russell Design Works must be notified within 48 hours of delivery of incomplete or damaged items. No returned product will be accepted for credit or replacement without pre-authorization from RDW. Only the original purchaser with the original RDW receipt or invoice may return the product. RDW shall have no obligation hereunder in the event the customer is unable to present a receipt(s) evidencing the date on which the product was purchased. All returns are subject to replacement or RDW credit only. No cash refunds. A restocking fee may apply.

Improper care or misuse.

Russell Design Works shall have no obligation hereunder in the event that products have been modified by any other person or organization, or where products become defective in whole or in part as a result of improper use, improper maintenance, improper installation, abnormal operation or any other misuse or mistreatment of the product.

For more details, or answers to your questions and concerns, email or phone us during business hours.